

PORTABLE POWERTM **6200**



Owner's Manual

Revision 2.11

Last Updated: 6-JUN-2012

Warning and Notice

- KEEP THE PORTABLE POWER 6200 AWAY FROM FLAME
- DO NOT INVERT BATTERY POLARITY
- DO NOT ALLOW THIS PRODUCT TO COME WITH CONTACT WITH WATER OR OTHER LIQUIDS
- DO NOT EXPOSE THIS PRODUCT IN AN ENVIRONMENT OVER 60°C OR DIRECT SUN SHINE IN THE CAR
- KEEP THIS PRODUCT AWAY FROM CHILDREN
- PLEASE DO NOT TOUCH THE INTERNAL CIRCUIT

© 2012 W3GEAR. All rights reserved.

Designated trademarks and brands are the property of their respective owners.

Standard Features

Battery Type	2 x 18650 Lithium Ion Battery
Capacity	3.7V 6200mAh
Rated Output	DC 5V \pm 5%, Max 1000mA
Rated Input	DC 5V \pm 5%, Max 1000mA
Standby Current	< 5 μ A
Recharge Time	6 - 8 hours
Indicator LEDs	- Blue LED: Above 60% power - Green LED: 30% ~ 60% power - Red LED: Below 30% power
Size	43mm x 107mm x 25mm
Weight	150g (Unit w/Batt) / 260g (Package)
Operating temperature	-10 ~ 40 degrees Celsius
Storage temperature	-20 ~ 60 degrees Celsius
Package Content	1x Portable Power 6200 1x iPhone/iPad charging cable 1x 10-in-1 charging cable 2x 3100mAh NCR18650A Lithium Ion Battery 1 x Owner's Manual

Package Content



*Also available in White

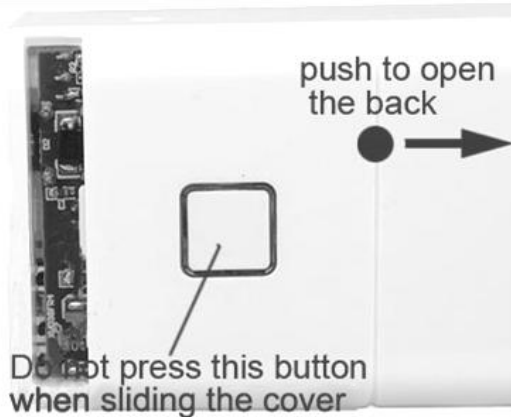


Before Using the Portable Power 6200

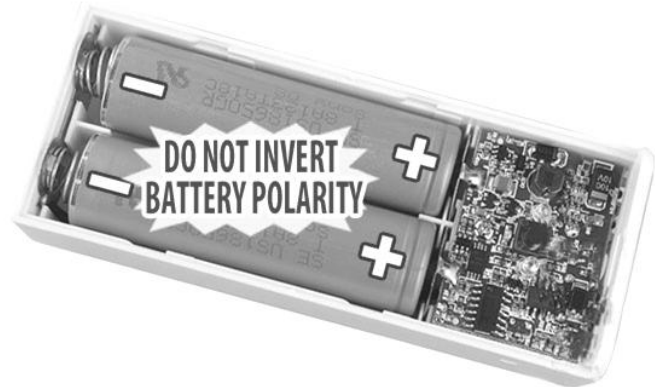
The Portable Power 6200 uses 2 x 18650 lithium ion batteries (the same sort of battery inside most laptop). We charge them up before we send them out – however, due to time in transit, you'll need to top it up before using it.

To install the batteries for Portable Power 6200:

- 1. Remove the battery cover by sliding the cover off the back of the Portable Power 6200**



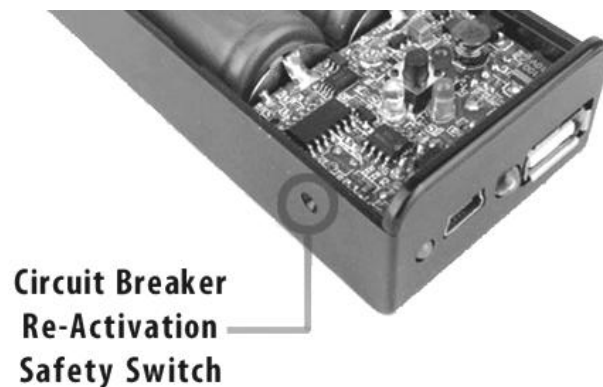
- 2. Insert the 18650 battery, observing the proper polarity into the battery compartment**



- 3. Replace the battery cover by sliding it back onto the Portable Power 6200 and fastening the latch**



- 4. Using a sharp object eg. Needle or Tooth pick, push the Circuit Breaker Re-Activation Switch to start using the battery for the first time**



To charge the batteries for Portable Power 6200:

1. Locate the mini-USB port on the top of the Portable Power 6200
2. Using the supplied charging cable, attached the Portable Power 6200 to a USB port on your computer, or any 1A USB wall charger
3. While charging, the red LED will stay on and it will turn to green when charging is completed.
4. The Portable Power 6200 requires approximately 6 - 8 hours for a full charge.

Operating the Portable Power 6200

To turn the Portable Power 6200 ON:

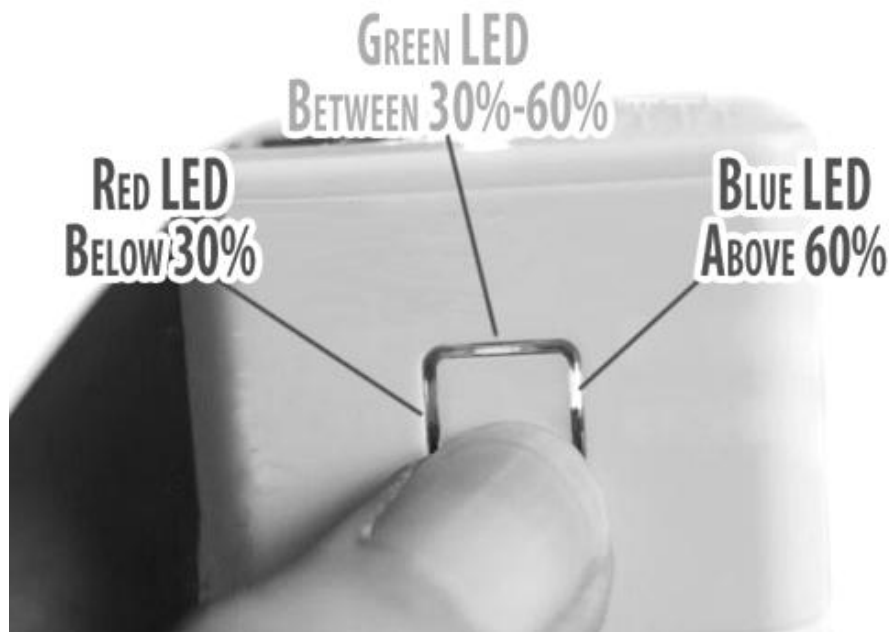
- Connect the Portable Power 6200 to your mobile phone/USB device using the suitable connector supplied.
- Press and hold the Power Button for approximately three seconds.
- The red LED will stay on, this indicates that the Portable Power 6200 now powering your mobile phone/USB device.

To turn the Portable Power 6200 OFF:

- Unplug your mobile phone/USB device from the Portable Power 6200.
- After unplugging from your mobile phone/USB device, the Portable Power 6200 will automatically shut down after 15 seconds of inactivity.
- **DO NOTE REMOVE THE BATTERY COVERY WHILE CHARGING.**

To check battery level on Portable Power 6200:

- While not connected to any device, press and hold on the power button, and you should see one or more colors of LED indicator light up.



Low Power & Automatic Shutdown:

When the Portable Power 6200 battery starts to run low, it will automatically shut itself down. If this happens, recharge the battery fully before turning the Portable Power 6200 on again.

The intelligent protection circuit in the Portable Power 6200 may automatically shutdown in the event of a short circuit or over heat / discharge for safety purpose. You can perform a reset on the Circuit Breaker Re-Activation Switch using a sharp tipped object eg. Needle or tooth pick.